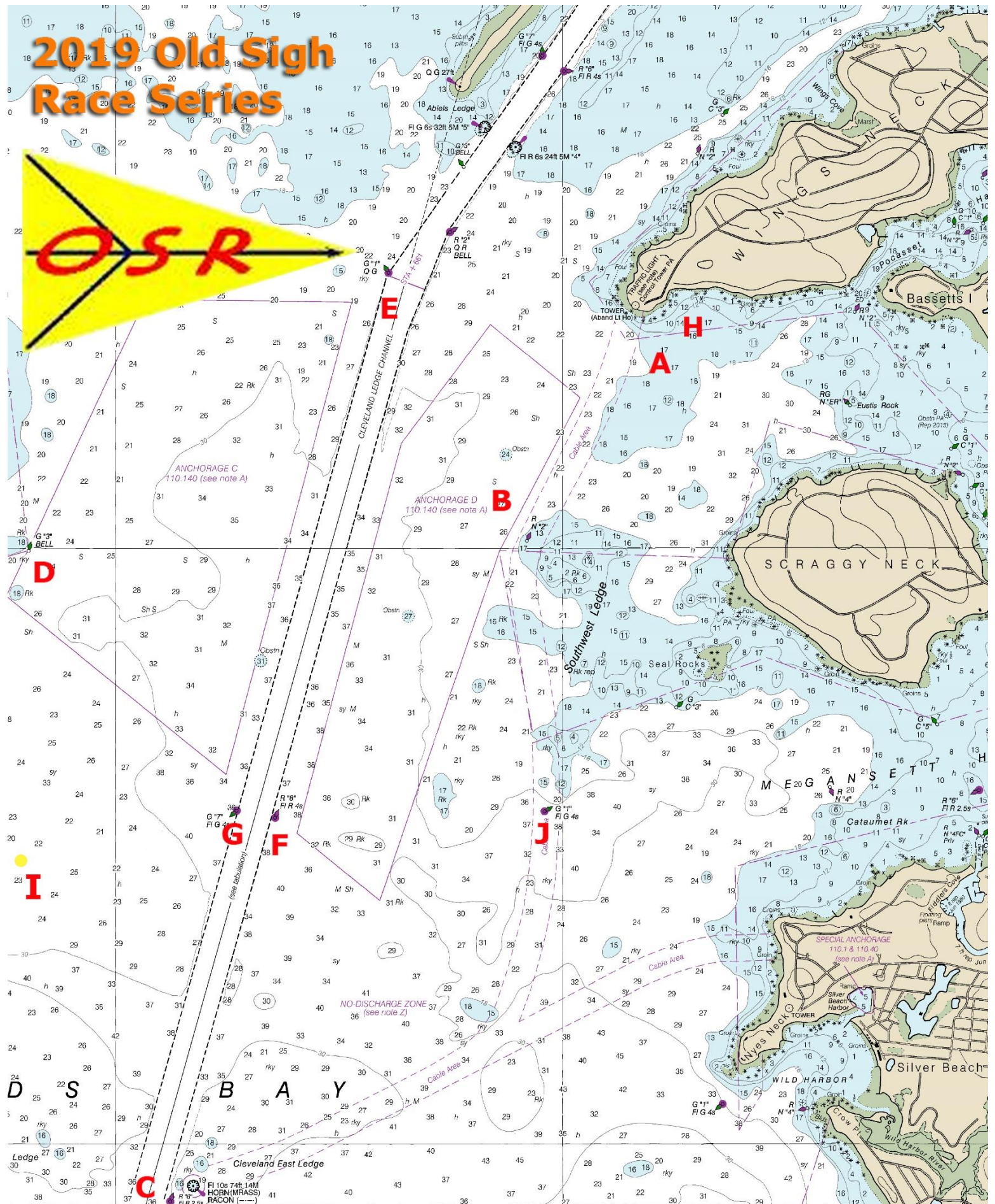


# 2019 Old Sigh Race Series





## OLD SIGH COURSE CHART 2019

Mark	Description	Latitude	Longitude
"A"	Start/Finish Pin (Yellow Inflatable)	N41 40.80	W70 39.99
"B"	Red Inflatable .03NM NW of Red Nun "2"	N41 40.12	W70 40.38
"C"	Cleveland Ledge Red "6" (Fi R)	N41 37.82	W70 41.72
"D"	Bird Island Green Bell Buoy "3"	N41 40.00	W70 42.37
"E"	Hog Island Channel Lighted Green Buoy "1" (Qk FI G)	N41 40.93	W70 40.77
"F"	Mid Cleveland Ledge Channel Red Buoy "8" (FI R)	N41 39.10	W70 41.23
"G"	Mid Cleveland Ledge Channel Green Gong "7" (FI G)	N41 39.13	W70 41.41
"H"	Inflatable mark NE of "A"	N41 40.711	W70 34.37
"I"	Yellow Beverly YC "N" Cylinder Buoy (old Bird Island Green Gong Buoy "1")	N41 39.00	W70 42.80
"J"	Southwest Ledge Green Buoy "1" (FI G)	N41 39.21	W70 39.52

**All racers must mind Old Sigh Rock (SW Ledge) Red Nun "2" (LAT N41 40.03 and LONG W70 40.12) at all times**